



# Solvents in Groundwater (TCE)

## Problem:

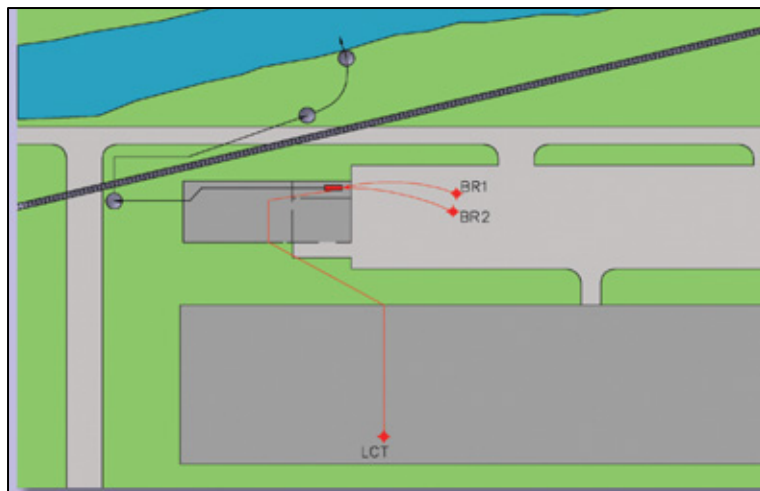
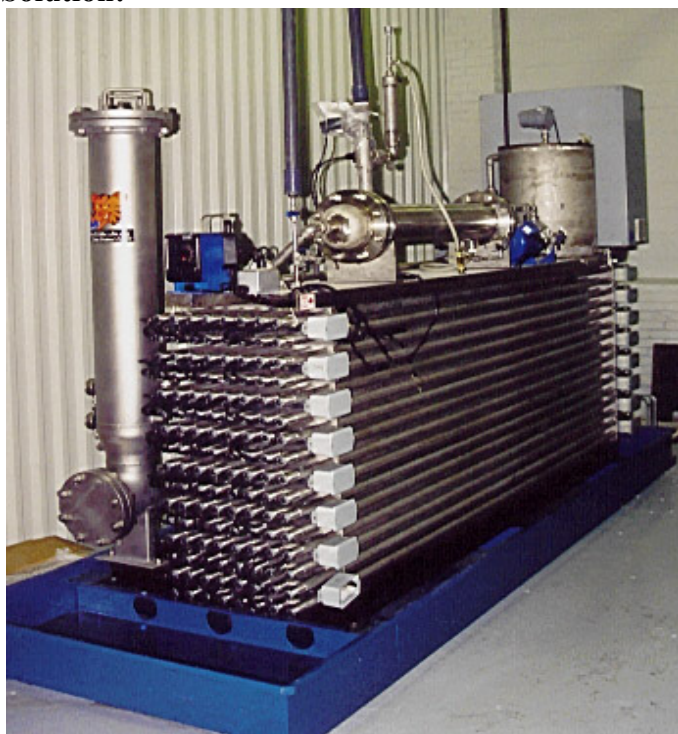
- Two Failed Underground Tanks
- Punctured Aquifer
- Chlorinated Solvents, Oil & Grease
- 3 Complex Carbon Trains Designed & Bid
- High O&M Cost & Labor
- No Performance Guarantee
- MOE Order

## Challenge:

- TCA Surges of 50,000 ppb: Well 3
- Treat 30,000 gal/day
- Surface Water Discharge

	Well 1 (ppb)	Well 2 (ppb)	Well 3 (ppb)	Effluent (ppb)
Flow Ratio	30	45	0.1	L/min
TCE	3,800	640	< 86	< 0.9
1,1-DCA	ND	ND	1,200	< 0.2
1,1,1-TCA	< 170	ND	2,500	< 0.9
Cis-1,2-DCE	5.5	87	< 86	< 0.9
Vinyl Chloride	ND	7.8	ND	< 0.5

## Solution:



- C of A #4-0140-96-987
- Centralized System
- Oil & Grease Recovery
- VFD/PID Pump Control
- Compliance Data Logging
- Duty 24/7; > 58,000 hrs

## Benefit:

### Reduced Life Cycle Cost

	Photo-Cat	Carbon	\$ Saved
Capital	\$194,272	\$96,797	\$ (97,475)
Annual O&M	\$18,222	\$44,266	\$26,044
Remote Monitoring	Included	Extra	
Performance Guarantee	Included	Extra	

- 40% O&M Cost Reduction
- 3.75 Year ROI with Upgrades
- Reduced System Complexity

Rev. January 23, 2008

**Unique Technologies...Achieve Solutions...Eliminate Problems**

340 Sovereign Road, London, ON, Canada, N6M 1A8, Tel: 519.473.5788, Fax: 519.473.0934, info@purifics.com, www.purifics.com