



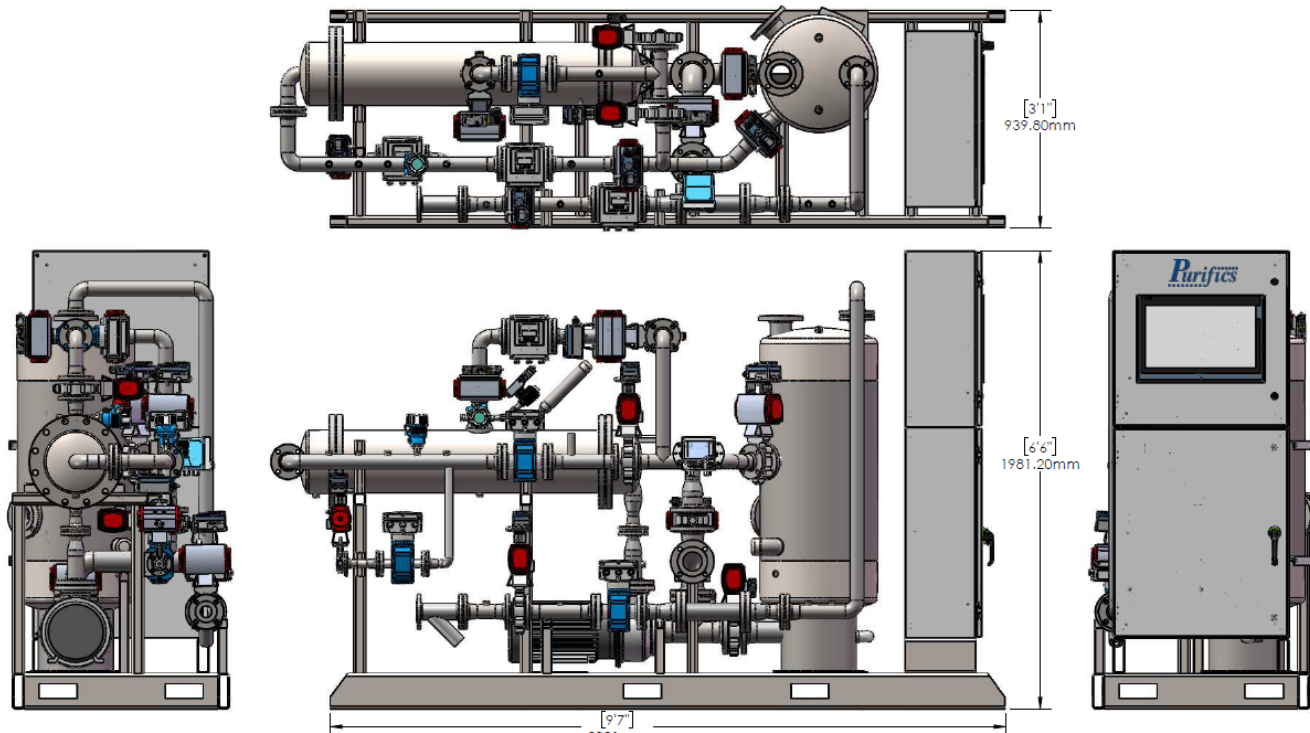
Flux vs Capacity *

FLUX LMH (GFD)	M10 l/s (GPM) MGD
1300 (766)	3.3 (53) 0.08
900 (530)	2.3 (36) 0.05
500 (295)	1.3 (20) 0.03

Performance & Equipment Specifications *

Duty	>99%	Membrane Life	25 Years
Automatic Turndown	0-100% Flow & Power	Wetted Material	Stainless Steel
Permeate Loss	0%	TMP Maintenance	Automatic
Operating Modes	Demand Flow	TMP Range	0-15 PSI, 0-1 Bar
Filtration Modes	Pressurized or Gravity Feed	Integrity Testing	Continuous-On-Line
Concentrate	Zero Liquid Discharge Carbon Capture	Gasket Material	Viton Or EPDM
Remote	Internet / WiFi	NEC	NFPA70, NFPA79 NFPA496, UL508A

May vary with each application *



Application Engineering Data			
Power	480 Volt, 3Ø, 50/60Hz 23 FLA	Inlet	2" #150 Flange
Network	Profinet	Outlet	2" #150 Flange
Instrument Air	2-3 cfm Oil Free 120 PSI, 8 Bar	Concentrate	1" #150 Flange
Weight Dry/Wet	1,800/2,400 LBS 820/1,100 KG	Air Supply	¼" NPT
Auxiliary Options*			
• Drive & Control Pumps	• Primary & Residual Disinfection	• DO Addition – Metals Removal	• Strainers
• Inline pH Control	• Level & Flow Control	• Coagulant Feed System – DOC Removal	• Transfer & Blending
• Inline Oxidation	• HSC Reactor	• Camera	• Automated DIT