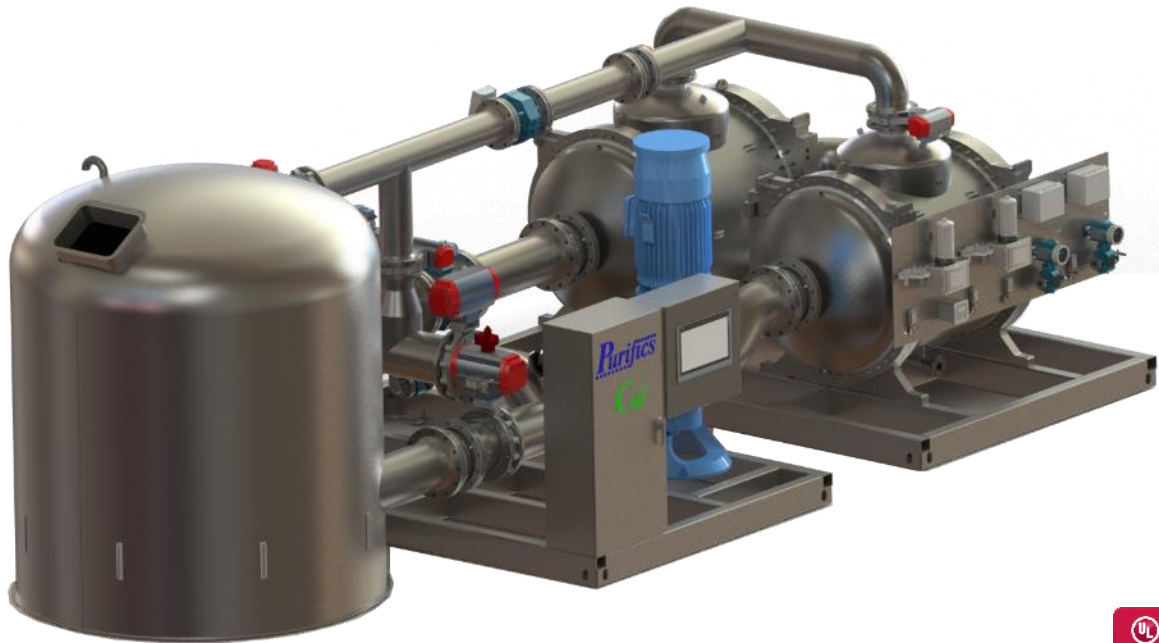


DM: Dual Membrane Module (shown below)
M: Single Membrane Module



Flux vs Capacity *

FLUX LMH (GFD)	M48 l/s (GPM) MGD	DM48 l/s (GPM) MGD
1300 (766)	76 (1208) 1.7	152 (2416) 3.4
900 (530)	53 (836) 1.2	106 (1672) 2.4
500 (295)	29 (465) 0.67	58.7 (930) 1.3

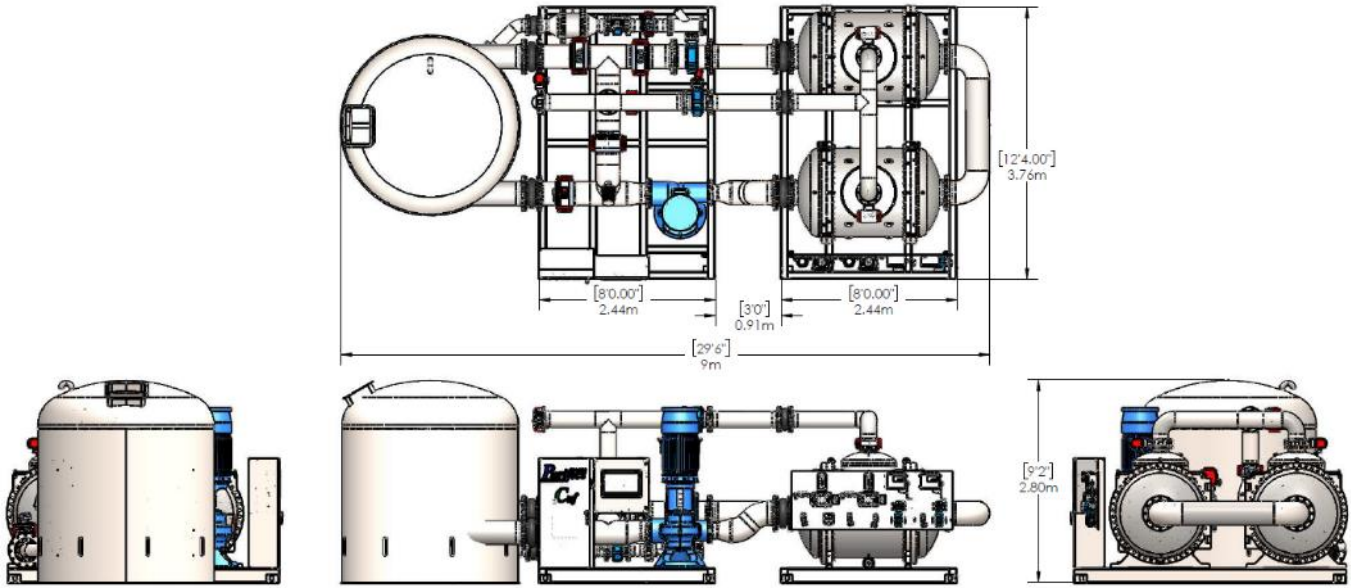
Performance & Equipment Specifications *

Duty Capability	>99%	Membrane Life	25 Years
Automatic Turndown	0-100% Flow & Power	Wetted Material	Stainless Steel
Filtrate Loss	0%	TMP Maintenance	Automatic
Operating Modes	Demand Flow	TMP Range	0-15 PSI, 0-1 Bar
Filtration Modes	Pressurized or Gravity Feed	Integrity Testing	Continuous-On-Line
Concentrate	Zero Liquid Discharge Carbon Capture	Gasket Material	Viton Or EPDM
Remote	Internet / WiFi	NEC	NFPA70, NFPA79 NFPA496, UL508A

May vary with each application *



M48 & DM48 Platforms



Application Engineering Data			
Power	480 Volt, 3Ø, 50/60Hz 200 / 240 FLA	Inlet Flange	10" #150 3.4 MGD 8" #150 2.4 MGD 6" #150 1.3 MGD
Network	Profinet	Outlet Flange	10" #150 3.4 MGD 8" #150 2.4 MGD 8" #150 1.3 MGD
Instrument Air	6-10 cfm Oil Free 120 PSI, 8 Bar	Concentrate	2" #150 Flange
Weight Dry/Wet	22,700/30,000 LBS 10,300/13,600 KG	Air Supply	3/4" NPT
Auxiliary Options*			
• Drive & Control Pumps	• Primary & Residual Disinfection	• DO Addition – Metals Removal	• Strainers
• Inline pH Control	• Level & Flow Control	• Coagulant Feed System – DOC Removal	• Transfer & Blending
• Inline Oxidation	• HSC Reactor	• Camera	• Automated DIT

Inlet & Outlet Flange Position are Configurable.



340 Sovereign Road, London, ON, Canada, N6M 1A8
Ph: 519-473 5788, info@Purifics.com, www.Purifics.com